

The Streams - Newsletter October 2015

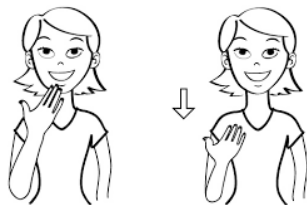
A big welcome to our new starters Ellis, Leila and Sophia. They have all settled in really well!

Our signs this month are please and thank you. We value good manners at nursery and feel that it is important for children to learn this at an early age. Please encourage your child to use these signs at home.

Please



Thank you



Important Dates

Wednesday 4th November - photographs (please bring in an extra outfit in case your child gets messy)

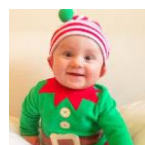
Friday 13th November - Children in Need

Sunday 22nd November - Christmas Fayre. If you wish to have a table to sell things please speak to a member of staff. Tables are £10. We will also be having a tombola and bottle stall. Any bottles or other donations are welcome.

Thursday 10th December - Christmas concert. This year the Streams and Rivers will be having a joint Christmas concert. Please dress your child in a Christmas outfit of your choice on this day. (places are limited to 2 adults per child)

Thursday 17th December - Christmas Party Day

(changed from 16th December)



This month we are focusing on the season of Autumn and looking at how the environment changes. We are supplying the children with a paper bag to take home so that they can collect leaves, twigs, pine cones etc... Please return the bag so that we can use them in our Autumn display and also in our artwork to explore texture and colour. This month we will also be singing songs and looking at the numbers 1,2 and 3. Remember to check our facebook page to see what we have been up to at nursery!



Our Halloween week is the week commencing 26th October. Children can wear fancy dress every day this week if they would like and we will be doing lots of spooky Halloween activities including pumpkin carving!



Friends of Shotley Bridge Nursery School

Thank you to the FOSBNS who raised £61 for the children's fund at our open day! Please remember your £1 weekly donation to our money boxes in the entrance. All contributions to the children's fund help towards trips and treats for the children. The FOSBNS are always looking for new members. Please speak to someone at nursery if you would like to join.